



Unit Assessment Sheet

Complete

Score	37 / 80 (46.25%)	Flagged items	1	Actions	0
-------	------------------	---------------	---	---------	---

2-4 External Pictures of Unit

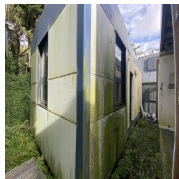


Photo 1



Photo 2



Photo 3



Photo 4



Photo 5

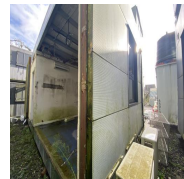


Photo 6

2-4 Internal Pictures of Unit

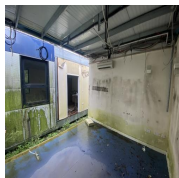


Photo 7



Photo 8



Photo 9

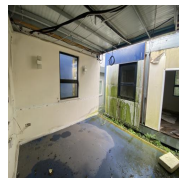


Photo 10

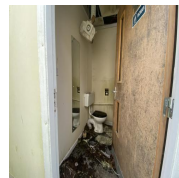


Photo 11

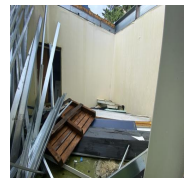


Photo 12

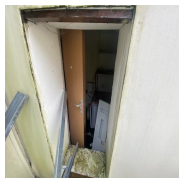


Photo 13

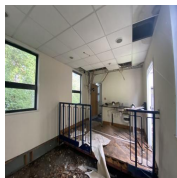


Photo 14

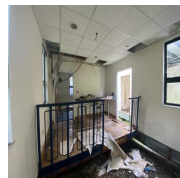


Photo 15

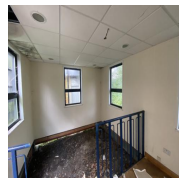


Photo 16

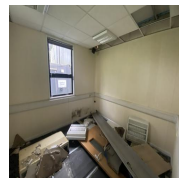


Photo 17

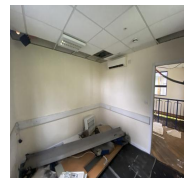


Photo 18

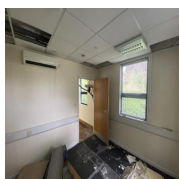


Photo 19

2204137-138 Modular Part of 2 Bay Sales

External	1 flagged, 1 / 9 (11.11%)
----------	---------------------------

Size (Length x Width X Height):	28ft x 12ft
---------------------------------	-------------

Maximum external dimension (eg. including legs, pipes, facade/cladding, AC units) (Length x Width X Height):	28ft x 12ft
--	-------------

Specification:	Modular Part of 2 Bay Sales
----------------	-----------------------------

Color:	N/A
Windows:	9
Doors:	3
Roof Insulation:	Yes
Wall Insulation:	Yes
Lifting:	Lifting Eye Top
Keys	No
Electrical	
Power in:	N/A
Consumer unit:	N/A
Lighting:	N/A
Number of lights:	0
Number of electrical sockets:	0
Number of electrical switches:	0
Heating:	N/A
Number of heaters:	0
Internal	2 / 2 (100%)
Rooms:	6
Floor finish:	Plywood/part vinyl
Wall finish:	Plasterboard
Kitchen unit:	Yes
Water heater:	Undercounter
Restroom:	Yes
Type:	Other

General

Fleet No. Supplier: **N/A**

Fleet No. JCPSA: **2204137-138**

Transport Company: **Other**

Date: **01.11.2023 13:51 GMT**

Assessed by: **Allan Galwas**

Flagged items

1 flagged

Title Page / External

Keys

No

External Inspection		16 / 21 (76.19%)
Roof		Good
Paint		N/A
Walls		Good
Floor Beams		Good
Windows		Good
Shutters		N/A
Doors		N/A
Keys		N/A
General Condition		Good
Overall External Assessment Summary		Structurally sound, needs cleaning/refurb

Internal Inspection		18 / 48 (37.5%)
Celling	Poor	
Score justification:	Missing pannels	
Walls	Fair	
Score justification:	Slight damage	
Windows	Good	
Partition Doors / Keys	Good	
No keys		
Trims	N/A	
Floor	Poor	
Score justification:	Damp	
Other fittings		
	Kitchen	Toilet
Kitchen unit	Poor	
Toilet/WC	Poor	
Toilet cubicles	N/A	
Cistern	Poor	
Handwash Basin	Poor	
Urinals	N/A	
Water heater	Poor	
Electrics	Poor	
Score justification:	Exposed wires/ hanging out	
General Condition	Fair	
Score justification:	Damaged inernal fittings	
Overall Internal Assessment Summary	Needs refurb + Clean	

Media summary



Photo 1



Photo 2



Photo 3



Photo 4



Photo 5



Photo 6



Photo 7



Photo 8



Photo 9



Photo 10

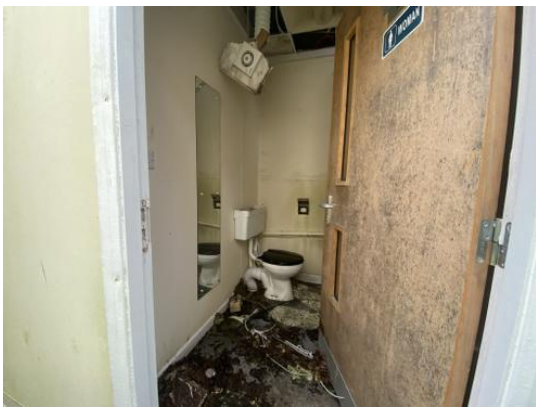


Photo 11



Photo 12



Photo 13



Photo 14



Photo 15



Photo 16



Photo 17



Photo 18



Photo 19