



## Unit Assessment Sheet

Complete

Score	41 / 69 (59.42%)	Flagged items	0	Actions	0
-------	------------------	---------------	---	---------	---

### 2-4 External Pictures of Unit



Photo 1



Photo 2

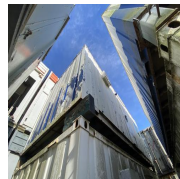


Photo 3

### 2-4 Internal Pictures of Unit

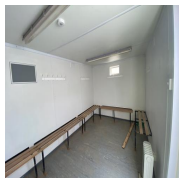


Photo 4

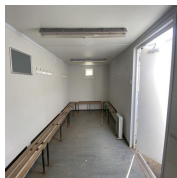


Photo 5

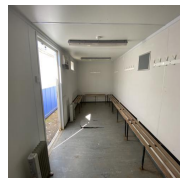


Photo 6



Photo 7



Photo 8

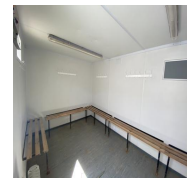



Photo 9

**2204143 21ft x 9ft AV Drying Room**

External	3 / 10 (30%)
Size (Length x Width X Height):	21ft x 9ft
Maximum external dimension (eg. including legs, pipes, facade/cladding, AC units) (Length x Width X Height):	21ft x 9ft
Specification:	AV Drying Room
Color:	White RAL Code TBC
Windows:	2
Doors:	1
Roof Insulation:	Yes
Wall Insulation:	Yes
Lifting:	ISO Corners Top

Keys	Yes
How many keys per lock are included?	Yes
Electrical	
Power in:	32A power plug
Consumer unit:	3 Way
	
Photo 10	
Lighting:	Fluorescent light
Number of lights:	2
Number of electrical sockets:	0
Number of electrical switches:	1
Heating:	Convactor heater
Number of heaters:	2
Internal	2 / 2 (100%)
Rooms:	1
Floor finish:	Vinyl
Wall finish:	Plasterboard
Kitchen unit:	N/A
Restroom:	N/A
General	
Fleet No. Supplier:	BV0584
Fleet No. JCPSA:	2204143
Transport Company:	Other

Date:

17.10.2023 13:10 BST

Assessed by:

Allan Galwas

External Inspection		18 / 29 (62.07%)
Roof		Fair
Score justification:		
Restricted access, No signs of leaks inside (Requires assessing)		
Paint		Poor
Score justification:		
Paint is cracked, starting to come off exposing old layer of paint.		
Walls		Good
Floor Beams		Fair
Score justification:	Internal floor damaged, Floor beam potentially damaged	
Windows		Good
Shutters		N/A
Doors		Good
Keys		Yes
How many keys per lock are included?		1
General Condition		Good
Overall External Assessment Summary	Damaged Paint, Old unit, Roof needs to be checked	

Internal Inspection		18 / 28 (64.29%)
Celling		Good
Walls		Good
Windows		Good
Partition Doors / Keys		N/A
Trims		Good
Floor		Bad
Score justification:		Damaged/Cracked floor
 <p>Photo 11</p>		
Other fittings		N/A
Electrics		Good
General Condition		Good
Overall Internal Assessment Summary		Floor structurally damaged, Clean unit, unit is water tight

## Media summary



Photo 1



Photo 2



Photo 3



Photo 4



Photo 5

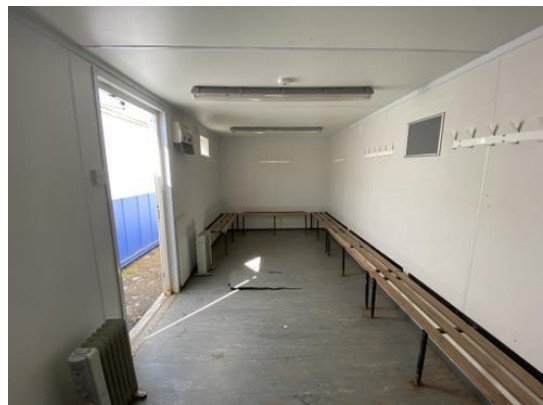


Photo 6



Photo 7



Photo 8



Photo 9



Photo 10





Photo 11