



Unit Assessment Sheet

Complete

Score	48 / 81 (59.26%)	Flagged items	0	Actions	0
-------	-------------------------	---------------	----------	---------	----------

2-4 External Pictures of Unit

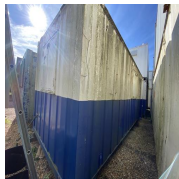


Photo 1



Photo 2

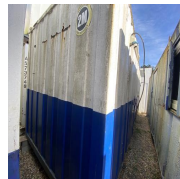


Photo 3

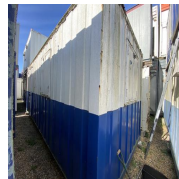


Photo 4



Photo 5

2-4 Internal Pictures of Unit

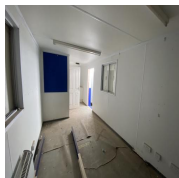


Photo 6

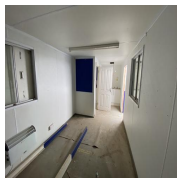


Photo 7

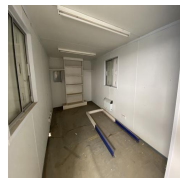


Photo 8

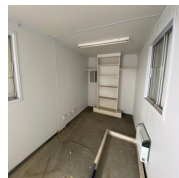


Photo 9



Photo 10

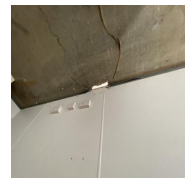


Photo 11

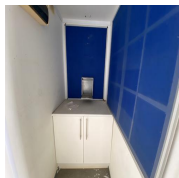




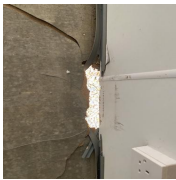
Photo 12

2204157 24ft x 9ft AV Office Unit

External	3 / 10 (30%)
Size (Length x Width X Height):	24ft x 9ft
Maximum external dimension (eg. including legs, pipes, facade/cladding, AC units) (Length x Width X Height):	24ft x 9ft
Specification:	AV Office Unit
Color:	RAL Code TBC
Windows:	2
Doors:	1

Roof Insulation:	Yes
Wall Insulation:	Yes
Lifting:	ISO Corners Top
Keys	Yes
How many keys per lock are included? 1	Yes
Electrical	
Power in:	32A power plug
Consumer unit:	4 Way
	
Photo 13	
Lighting:	Fluorescent light
Number of lights:	3
Number of electrical sockets: (Double sockets)	4
Number of electrical switches:	4
Heating:	Convactor heater
Number of heaters:	1
Internal	2 / 2 (100%)
Rooms:	2
Floor finish:	Vinyl
Wall finish:	Plasterboard
Kitchen unit:	Yes
Water heater:	N/A

Restroom:	N/A
General	
Fleet No. Supplier:	BV0660
Fleet No. JCPSA:	2204157
Transport Company:	Other
Date:	17.10.2023 13:21 BST
Assessed by:	Allan Galwas

External Inspection		21 / 33 (63.64%)
Roof		Fair
		
	Photo 14	
Score justification:		Rusty, showing age, Unit is dry inside
Paint		Fair
Score justification:		Paint starting to rust + paint cracked
Walls		Good
Floor Beams		Fair
Score justification:		Hole in the floor, structurally damaged
		
	Photo 15	
Windows		Good
Shutters		Good
Doors		Good
Keys		Yes
How many keys per lock are included?		1
General Condition		Fair
Score justification:		Damaged floor + Paint
Overall External Assessment Summary		Damaged floor + Paint, Unit showing age

Internal Inspection 22 / 36 (61.11%)

Celling	Good
Walls	Fair

Score justification:

Lots of tiny pin holes



Photo 16

Windows	Good
Partition Doors / Keys	Fair

Score justification:

No key for internal door

Trims	Good
Floor	Poor

Score justification:

Vinyl coming off + structurally damaged floor



Photo 17

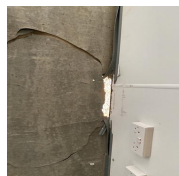


Photo 18

Other fittings	Kitchen
Kitchen unit	Good
Electrics	Good
General Condition	Fair

Score justification:

Damaged walls + floor

Overall Internal Assessment Summary

Floor structurally damaged + minor damage to walls, Unit showing age

Media summary



Photo 1



Photo 2



Photo 3



Photo 4



Photo 5



Photo 6



Photo 7



Photo 8



Photo 9



Photo 10



Photo 11



Photo 12

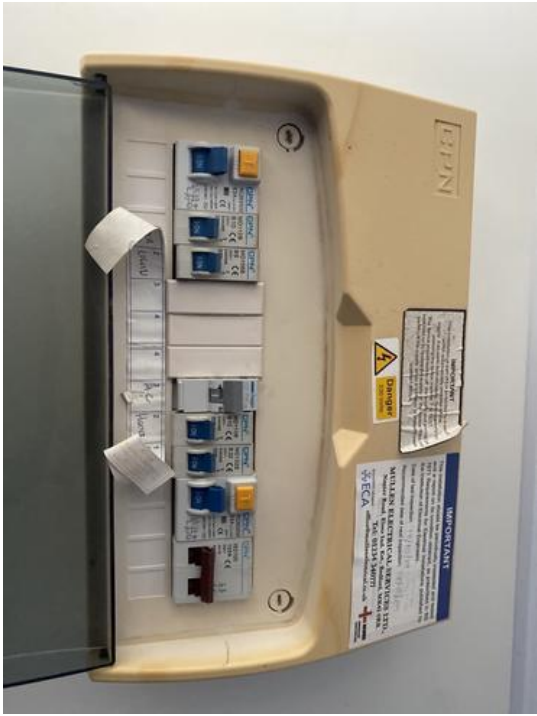


Photo 13



Photo 14



Photo 15



Photo 16



Photo 17



Photo 18