



Unit Assessment Sheet

Complete

Score	48 / 73 (65.75%)	Flagged items	0	Actions	0
-------	-------------------------	---------------	----------	---------	----------

2-4 External Pictures of Unit



Photo 1



Photo 2



Photo 3

2-4 Internal Pictures of Unit



Photo 4

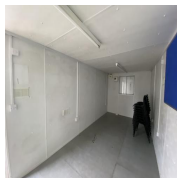


Photo 5

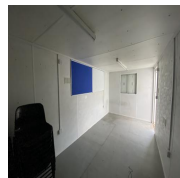




Photo 6



Photo 7

2211387 21ft x 9ft Used Office

External	3 / 10 (30%)
Size (Length x Width X Height):	21ft x 9ft
Maximum external dimension (eg. including legs, pipes, facade/cladding, AC units) (Length x Width X Height):	21ft x 9ft
Specification:	Used Office
Color:	White RAL Code TBC
Windows:	2
Doors:	1
Roof Insulation:	Yes
Wall Insulation:	Yes
Lifting:	Lifting Eye Bottom

Keys	Yes
How many keys per lock are included?	Yes
One	
Electrical	
Power in:	32A power plug
Consumer unit:	2 Way
	
Photo 8	
Lighting:	Fluorescent LED light
Number of lights:	3
Number of electrical sockets:	4
Number of electrical switches:	4
Heating:	Convactor heater
	
Photo 9	
Number of heaters:	1
Internal	2 / 2 (100%)
Rooms:	1
Floor finish:	Vinyl
Wall finish:	Plasterboard
Kitchen unit:	N/A
Restroom:	N/A
General	

Fleet No. Supplier: **A678492**





Fleet No. JCPSA: **2211387**

Transport Company: **Other**

Date: **19.10.2023 12:16 BST**

Assessed by: **Allan Galwas**

External Inspection		23 / 33 (69.7%)
Roof		Fair
Score justification: Restricted access(Needs checking), Unit dry inside, no signs of leaks		
Paint		Fair
Score justification: Glue residue, some rust		
Walls		Good
Floor Beams		Good
Windows		Good
Shutters		Good
Doors		Good
Keys		Yes
How many keys per lock are included?		1
General Condition		Good
Overall External Assessment Summary Minimal damage on paint, structurally sound. Roof requires inspecting		

Internal Inspection		20 / 28 (71.43%)	
Ceiling		Good	
Walls		Fair	
Score justification:		Pin holes in a few of the wall panels, bit of mould	
			
Photo 10	Photo 11	Photo 12	Photo 13
Windows		Good	
Partition Doors / Keys		N/A	
Trims		Good	
Floor		Good	
Other fittings		N/A	
Electrics		Good	
General Condition		Good	
Overall Internal Assessment Summary		Clean + Dry unit, Stain on vinyl, Structurally sound	

Media summary



Photo 1



Photo 2



Photo 3



Photo 4



Photo 5



Photo 6



Photo 7

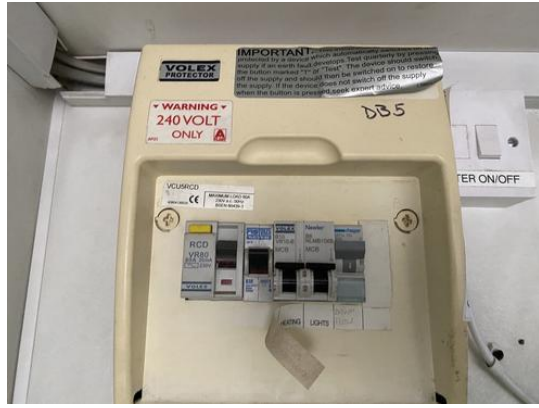


Photo 8



Photo 9



Photo 10



Photo 11



Photo 12



Photo 13