



Unit Assessment Sheet

Complete

Score	35 / 73 (47.95%)	Flagged items	1	Actions	0
-------	------------------	---------------	---	---------	---

2-4 External Pictures of Unit



Photo 1



Photo 2



Photo 3



Photo 4



Photo 5

2-4 Internal Pictures of Unit

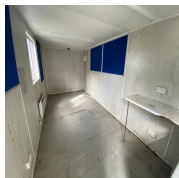


Photo 6



Photo 7



Photo 8



Photo 9

2302024 20ft x 9ft Used AV
Canteen Dryer

Size (Length x Width X Height):

20ft x 9ft Used AV Canteen
Dryer

Specification:

Power in:

Isolator switch

Consumer unit:

5 Way



Photo 10

Lighting:

Fluorescent LED light

Number of lights:

2

Number of electrical sockets:

3

Heating:	Convector heater
Number of heaters:	1
Kitchen unit:	Yes
Water heater:	Oversink
Restroom:	N/A
Color:	N/A
Lifting:	ISO Corners Top Forklift pockets
Fleet No. Supplier:	MS316189
Fleet No. JCPSA:	2302024
Maximum external dimension (eg. including legs, pipes, facade/cladding, AC units) (Length x Width X Height)	
Transport Company:	Other
Date:	14.09.2023 11:17 BST
Assessed by:	Allan Galwas


Flagged items

1 flagged

External Inspection

Keys

No

External Inspection	1 flagged, 12 / 29 (41.38%)
Roof	Poor
Score Justification:	Lots of rust + cannot see entire roof due to restricted access
Paint	Poor
Score justification:	Lots of rust all around + showing age
Walls	Good
Floor Beams	Good
Windows	Bad
Score justification:	Windows doesn't close
 <p>Photo 11</p>	
Shutters	N/A
Doors	Fair
Difficult to open + missing key	
Keys	No
General Condition	Fair
Score justification:	Damaged walls + faulty door
Overall External Assessment Summary	Fair condition, walls covered in rust + paint coming off

Internal Inspection

18 / 32 (56.25%)

Celling

Fair

Rust on edges (signs of leak)



Photo 12

Walls

Fair

Score justification:

Mouldy + marks all over



Photo 13



Photo 14

Windows

Bad

Score justification:

Does not close

Partition Doors / Keys

N/A

Trims

Good

Floor

Fair

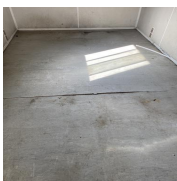


Photo 15

Score justification:

Cracked floor

Other fittings

Kitchen

Kitchen unit

Good

Electrics

Good

General Condition

Good

Overall Internal Assessment Summary

Fair condition , structurally sound

Media summary



Photo 1



Photo 2



Photo 3



Photo 4



Photo 5



Photo 6



Photo 7



Photo 8



Photo 9



Photo 10



Photo 11



Photo 12



Photo 13



Photo 14



Photo 15