



# Unit Assessment Sheet

Complete

Score	59 / 89 (66.29%)	Flagged items	1	Actions	0
-------	------------------	---------------	---	---------	---

## 2-4 External Pictures of Unit



Photo 1



Photo 2



Photo 3



Photo 4



Photo 5

## 2-4 Internal Pictures of Unit



Photo 6

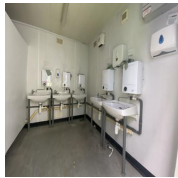


Photo 7



Photo 8



Photo 9



Photo 10



Photo 11



Photo 12

2302028 32ft x 10ft Used  
Portable 5+1+1 Male/Female  
Toilet/DDA/Shower Block

**Size (Length x Width X Height):**

32ft x 10ft

**Specification:**

Used Portable 5+1+1  
Male/Female  
Toilet/DDA/Shower Block

**Power in:**

32A power plug

**Consumer unit:**

6 Way

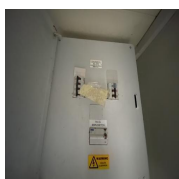


Photo 13

<b>Lighting:</b>	Fluorescent light
<b>Number of lights:</b>	4
<b>Number of electrical sockets:</b>	0
<b>Heating:</b>	N/A
<b>Number of heaters:</b>	0
<b>Kitchen unit:</b>	N/A
<b>Restroom:</b>	Yes
<b>Type:</b>	5 Gents + 1 Ladies
<b>Color:</b>	White RAL Code TBC
<b>Lifting:</b>	Forklift pockets Jacklegs
<b>Fleet No. Supplier:</b>	BB34668
<b>Fleet No. JCPSA:</b>	2302028
<b>Maximum external dimension (eg. including legs, pipes, facade/cladding, AC units) (Length x Width X Height)</b>	
<b>Transport Company:</b>	Other
<b>Date:</b>	13.10.2023 10:30 BST
<b>Assessed by:</b>	Allan Galwas

**Flagged items**

1 flagged

External Inspection

**Keys**

No

<b>External Inspection</b>	1 flagged, 16 / 25 (64%)
<b>Roof</b>	Good
<b>Paint</b>	Fair
<b>Score justification:</b>	Paint starting to crack a bit on the corners of the unit
<b>Walls</b>	Good
<b>Floor Beams</b>	Good
<b>Windows</b>	N/A
<b>Shutters</b>	N/A
<b>Doors</b>	Fair
<b>Keys</b>	No
<b>General Condition</b>	Good
<b>Overall External Assessment Summary</b>	2 missing keys therefore no access

<b>Internal Inspection</b>	38 / 52 (73.08%)
<b>Celling</b>	Good
<b>Walls</b>	Good
<b>Windows</b>	N/A
<b>Partition Doors / Keys</b>	Fair
<b>Score justification:</b>	2 missing keys
<b>Trims</b>	Good
<b>Floor</b>	Good
<b>Other fittings</b>	Toilet
<b>Toilet/WC</b>	Good
<b>Toilet cubicles</b>	Good
<b>Cistern</b>	Good
<b>Handwash Basin</b>	Good
<b>Urinals</b>	Good
<b>Water heater</b>	Good
<b>Electrics</b>	Good
<b>General Condition</b>	Good
<b>Overall Internal Assessment Summary</b>	Structurally sound, Only has two missing keys

## Media summary



Photo 1



Photo 2



Photo 3



Photo 4



Photo 5



Photo 6



Photo 7



Photo 8



Photo 9



Photo 10



Photo 11



Photo 12



Photo 13