



# Unit Assessment Sheet

Complete

|       |                  |               |   |         |   |
|-------|------------------|---------------|---|---------|---|
| Score | 62 / 89 (69.66%) | Flagged items | 1 | Actions | 0 |
|-------|------------------|---------------|---|---------|---|

## 2-4 External Pictures of Unit



Photo 1



Photo 2



Photo 3



Photo 4

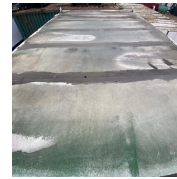


Photo 5

## 2-4 Internal Pictures of Unit

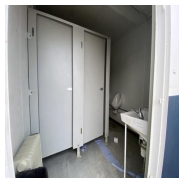


Photo 6

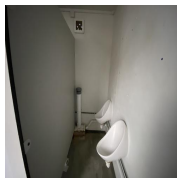


Photo 7

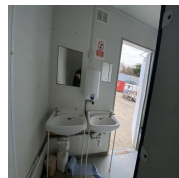


Photo 8

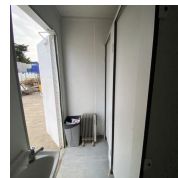


Photo 9



Photo 10



Photo 11

2309213 13ft x 9ft Used AV 2+1 Toilet Block

**Size (Length x Width X Height):**

13ft x 9ft

**Specification:**

Used 2+1 Toilet Block

**Power in:**

32A power plug

**Consumer unit:**

3 Way



Photo 12

**Lighting:**

Fluorescent LED light

**Number of lights:**

2

**Number of electrical sockets:**

0

**Heating:**

Convactor heater

|  |   |
|--|---|
| <b>Number of heaters:</b>  | 1   |
| <b>Kitchen unit:</b>   | N/A   |
| <b>Restroom:</b>   | Yes   |
| <b>Type:</b>   | 2 Gents + 1 Ladies  |
| <b>Color:</b>  | White and blue RAL Code TBC   |
| <b>Lifting:</b>  | <ul style="list-style-type: none"> <li>Lifting Eye Top</li> <li>Lifting Eye Bottom</li> <li>Jacklegs</li> <li>Forklift pockets</li> </ul> |
| <b>Fleet No. Supplier:</b>   | A605801   |
| <b>Fleet No. JCPSA:</b>  | 2309213   |
| <b>Maximum external dimension (eg. including legs, pipes, facade/cladding, AC units) (Length x Width X Height)</b> |   |
| <b>Transport Company:</b>  | Other   |
| <b>Date:</b>   | 05.10.2023 07:36 BST  |
| <b>Assessed by:</b>  | Allan Galwas  |

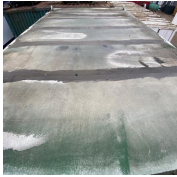
**Flagged items**

1 flagged

External Inspection

**Keys**

No

| <b>External Inspection</b>                 |   | 1 flagged, 18 / 25 (72%) |
|--|---|--------------------------|
| <b>Roof</b>                                |   | Good                     |
|  |  <p>Photo 13</p> |                          |
| <b>Paint</b>                               |   | Good                     |
| <b>Walls</b>                               |   | Good                     |
| <b>Floor Beams</b>                         |   | Good                     |
| <b>Windows</b>                             |   | N/A                      |
| <b>Shutters</b>                            |   | N/A                      |
| <b>Doors</b>                               |   | Good                     |
| <b>Keys</b>                                |   | No                       |
| <b>General Condition</b>                   |   | Good                     |
| <b>Overall External Assessment Summary</b> | Unit starting to show some age, no structural damage  |                          |

|  |                    |
|--|--------------------|
| <b>Internal Inspection</b>                 | 37 / 52 (71.15%)   |
| <b>Celling</b>                             | Good               |
| <b>Walls</b>                               | Good               |
| <b>Windows</b>                             | N/A                |
| <b>Partition Doors / Keys</b>              | Poor               |
| <b>Score justification:</b>                | Missing keys       |
| <b>Trims</b>                               | Good               |
| <b>Floor</b>                               | Good               |
| <b>Other fittings</b>                      | Toilet             |
| <b>Toilet/WC</b>                           | Good               |
| <b>Toilet cubicles</b>                     | Good               |
| <b>Cistern</b>                             | Good               |
| <b>Handwash Basin</b>                      | Good               |
| <b>Urinals</b>                             | Good               |
| <b>Water heater</b>                        | Good               |
| <b>Electrics</b>                           | Good               |
| <b>General Condition</b>                   | Good               |
| <b>Overall Internal Assessment Summary</b> | No internal damage |

## Media summary



Photo 1



Photo 2



Photo 3



Photo 4



Photo 5

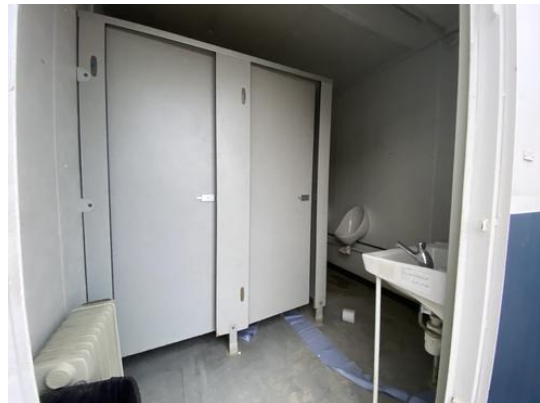


Photo 6

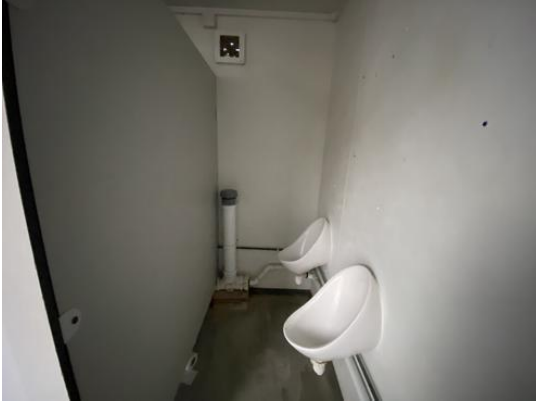


Photo 7



Photo 8



Photo 9



Photo 10

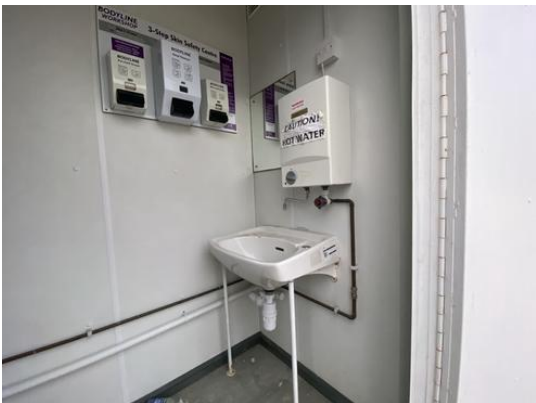


Photo 11



Photo 12



Photo 13