



# Unit Assessment Sheet

**Complete**

Score	<b>59 / 96 (61.46%)</b>	Flagged items	<b>2</b>	Actions	<b>0</b>
-------	-------------------------	---------------	----------	---------	----------

## 2-4 External Pictures of Unit



Photo 1

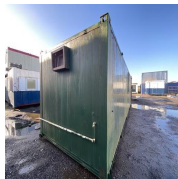


Photo 2



Photo 3

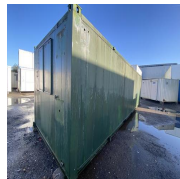


Photo 4

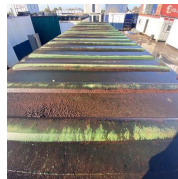


Photo 5

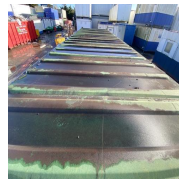


Photo 6

## 2-4 Internal Pictures of Unit



Photo 7

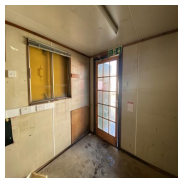


Photo 8

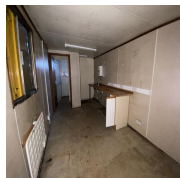


Photo 9

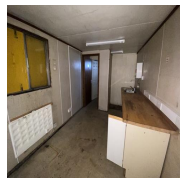


Photo 10

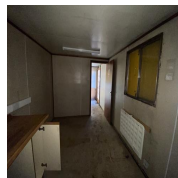


Photo 11

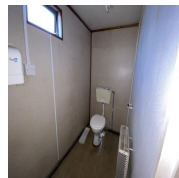


Photo 12

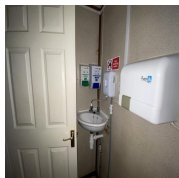


Photo 13

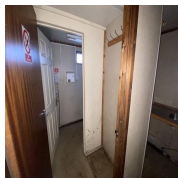


Photo 14

**2303106 32ft x 10ft Used AV Office**

External

1 flagged, 1 / 9 (11.11%)

Size (Length x Width X Height):

**32ft x 10ft**

Maximum external dimension (eg. including legs, pipes, facade/cladding, AC units) (Length x Width X Height):

**32ft x 10ft**

Specification:

**Used AV Office**

Color:

**RAL Code TBC**

Windows:

**3**

Doors:

**2**

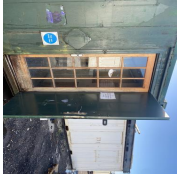


Photo 15

Roof Insulation:	Yes
Wall Insulation:	Yes
Lifting:	ISO Corners Top
Keys	No
Electrical	
Power in:	N/A
Consumer unit:	7 way
Photo 16	
Lighting:	Fluorescent light
Number of lights:	6
Number of electrical sockets:	13
9x double, 4x single	
Number of electrical switches:	7
Heating:	Panel heater
Photo 17	
Number of heaters:	1
Internal	2 / 2 (100%)
Rooms:	3

Floor finish:	Vinyl
Wall finish:	Vinyl faced ply
Kitchen unit:	Yes
Water heater:	Oversink
Restroom:	Yes
Type:	Other
General	
Fleet No. Supplier:	AFS96612
Fleet No. JCPSA:	2303106
Transport Company:	Other
Date:	17.11.2023 10:36 GMT
Assessed by:	Allan Galwas

**Flagged items**

2 flagged

Title Page / External


Keys

No

External Inspection

Keys

No

<b>External Inspection</b>		1 flagged, 21 / 33 (63.64%)
Roof		<b>Fair</b>
Score justification:		<b>Rusty, showing age</b>
Paint		<b>Fair</b>
Score justification:		<b>Showing age, starting to lose its colour</b>
Walls		<b>Good</b>
Floor Beams		<b>Good</b>
Windows		<b>Good</b>
Shutters		<b>Good</b>
Doors		<b>Fair</b>
Missing key, damaged/rusty from the bottom		
		
Photo 18		
Keys		<b>No</b>
General Condition		<b>Good</b>
Overall External Assessment Summary		<b>Paint + roof showing age, no signs of leaks.</b>


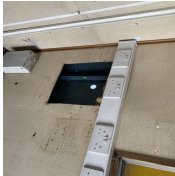



Internal Inspection		35 / 52 (67.31%)
Celling		Good
Walls		Fair
Score justification:	<b>Worn, cut-out, single hole found</b>	
		
Photo 19	Photo 20	Photo 21
Windows		Good
Partition Doors / Keys		Fair
Score justification:	<b>No keys for internal doors, bathroom +entrance door do not close</b>	
Trims		Good
Floor		Fair
		
Photo 22	Photo 23	
Score justification:	<b>Stained/worn vinyl</b>	
Other fittings	Kitchen	Toilet
Kitchen unit		Good
Toilet/WC		Good
Toilet cubicles		N/A
Cistern		Fair



Photo 24

Handwash Basin	Good
Urinals	N/A
Water heater	Good
Electrics	Good
General Condition	Good

Overall Internal Assessment Summary

**Old unit (needs a clean) dry inside, minor damage found on walls + floor**

## Media summary



Photo 1



Photo 2



Photo 3



Photo 4

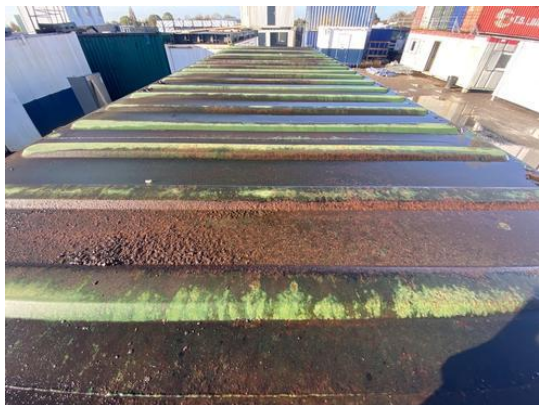


Photo 5

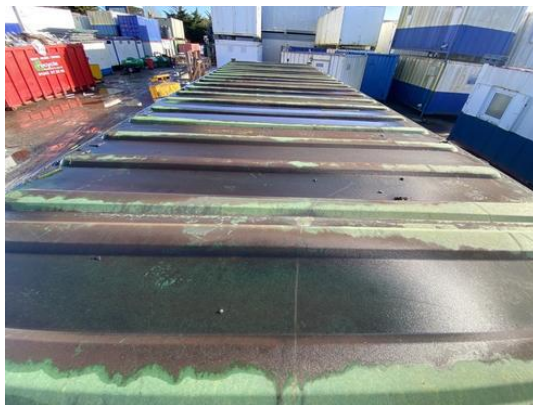


Photo 6





Photo 7



Photo 8



Photo 9



Photo 10



Photo 11



Photo 12



Photo 13



Photo 14



Photo 15



Photo 16



Photo 17



Photo 18



Photo 19



Photo 20



Photo 21



Photo 22



Photo 23



Photo 24