



Unit Assessment Sheet

Complete

Score	43 / 69 (62.32%)	Flagged items	0	Actions	0
--------------	------------------	----------------------	---	----------------	---

2-4 External Pictures of Unit

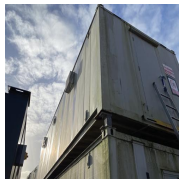


Photo 1

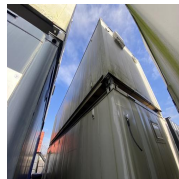


Photo 2



Photo 3

2-4 Internal Pictures of Unit



Photo 4



Photo 5



Photo 6



Photo 7

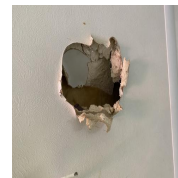


Photo 8

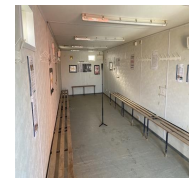


Photo 9



Photo 10

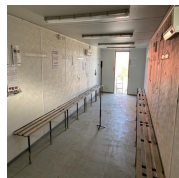


Photo 11



Photo 12

2312247 32ft x 10ft Drying room

External 3 / 10 (30%)

Size (Length x Width X Height): 32ft x 10ft x 8ft

Maximum external dimension (eg. including legs, pipes, facade/cladding, AC units) (Length x Width X Height): Facade above door 8cm

Specification: AV Flat Steel Drying Room

Color: Light Grey RAL not specified

Windows: 2 high level

Doors: 1 on end

Roof Insulation:

Yes



Photo 13

Wall Insulation:

Yes



Photo 14



Photo 15



Photo 16

Lifting:

ISO Corners Top

Keys

Yes

How many keys per lock are included?

Yes

Electrical

Power in:

32A power plug

Consumer unit:

12 way



Photo 17

Lighting:

LED panel light

Number of lights:

4

Number of electrical sockets:

2

Number of electrical switches:

1

Heating:

Convactor heater

Number of heaters:

2

Internal

2 / 2 (100%)

Rooms:

1

Floor finish:	HDV Vinyl
Wall finish:	Vinyl faced plasterboard
Kitchen unit:	N/A
Restroom:	N/A
General	
Fleet No. Supplier:	
Fleet No. JCPSA:	17622
Transport Company:	Other
Date:	03.01.2024 14:28 GMT
Assessed by:	Mario Bodis

External Inspection	21 / 29 (72.41%)
Roof	Good
Paint	Fair
Score justification:	Shows ageing decent condition
Walls	Good
Floor Beams	Good
Windows	Good
Shutters	N/A
Doors	Good
Keys	N/A
General Condition	Good
Overall External Assessment Summary	Good overall external condition

Internal Inspection 17 / 28 (60.71%)

Celling

Fair



Photo 18

Walls

Poor



Photo 19



Photo 20



Photo 21

Score justification:

3 different holes in plasterboard

Windows

Good

Partition Doors / Keys

N/A

Trims

Good

Floor

Good

Other fittings

N/A

Electrics

Good

General Condition

Fair

Score justification:

Fair condition, few holes

Overall Internal Assessment Summary

Fair condition, dry unit, few holes inside plasterboard

Media summary



Photo 1



Photo 2



Photo 3



Photo 4



Photo 5



Photo 6



Photo 7



Photo 8



Photo 9



Photo 10



Photo 11

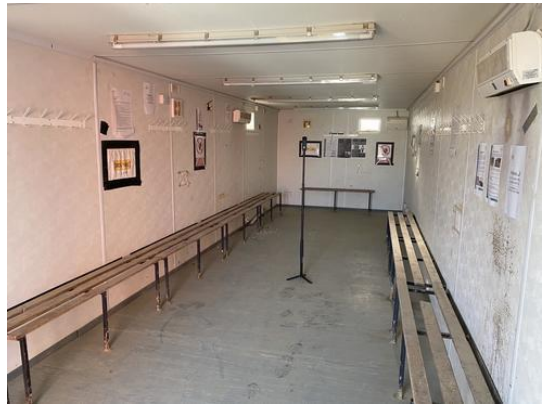


Photo 12



Photo 13



Photo 14



Photo 15



Photo 16



Photo 17



Photo 18



Photo 19



Photo 20



Photo 21