



# Unit Assessment Sheet

Complete

<b>Score</b>	52 / 73 (71.23%)	<b>Flagged items</b>	0	<b>Actions</b>	0
--------------	------------------	----------------------	---	----------------	---

## 2-4 External Pictures of Unit



Photo 1



Photo 2



Photo 3

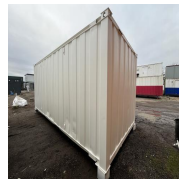


Photo 4

## 2-4 Internal Pictures of Unit



Photo 5

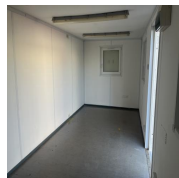


Photo 6

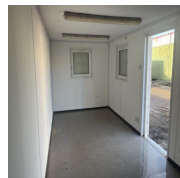


Photo 7

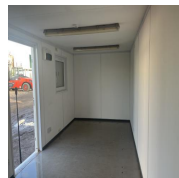


Photo 8



Photo 9

2204142 21ft x 9ft AV Office

<b>External</b>	4 / 10 (40%)
-----------------	--------------

**Size (Length x Width X Height):** 21ft x 9ft x 8ft

**Maximum external dimension (eg. including legs, pipes, facade/cladding, AC units) (Length x Width X Height):** 21ft x 9ft x 8ft

**Specification:** Anti-Vandal Office

**Color:** RAL 9010

**Windows:** 3 no 915x1060 AV

**Doors:** 1 no 875 x 2125

**Roof Insulation:** Yes

**Wall Insulation:** Yes

**Lifting:**

	ISO Corners Top	Forklift pockets
<b>Keys</b>		Yes
<b>How many keys per lock are included?</b>		Yes
Electrical		
<b>Power in:</b>		32A power plug
<b>Consumer unit:</b>		Yes 10-Way
<b>Lighting:</b>		LED panel light
<b>Number of lights:</b>		2
<b>Number of electrical sockets:</b>		2
<b>Number of electrical switches:</b>		1
<b>Heating:</b>		Convecter heater
<b>Number of heaters:</b>		1
Internal		2 / 2 (100%)
<b>Rooms:</b>		1
<b>Floor finish:</b>		HDV Vinyl
<b>Wall finish:</b>		Vinyl faced plasterboard
<b>Kitchen unit:</b>		N/A
<b>Restroom:</b>		N/A
General		
<b>Fleet No. Supplier:</b>		
<b>Fleet No. JCPSA:</b>		2204142
<b>Transport Company:</b>		Other
<b>Date:</b>		17.01.2024 08:52 GMT
<b>Assessed by:</b>		Mario Bodis

<b>External Inspection</b>		25 / 33 (75.76%)
<b>Roof</b>		Good
<b>Paint</b>		Good
<b>Walls</b>		Good
<b>Floor Beams</b>		Good
<b>Windows</b>		Good
<b>Shutters</b>		Good
<b>Doors</b>		Good
<b>Keys</b>		Yes
<b>How many keys per lock are included?</b>		1
<b>General Condition</b>		Good
<b>Overall External Assessment Summary</b>	Good Condition, Refurbished Unit	

<b>Internal Inspection</b>	21 / 28 (75%)
<b>Celling</b>	Good
<b>Walls</b>	Good
<b>Windows</b>	Good
<b>Partition Doors / Keys</b>	N/A
<b>Trims</b>	Good
<b>Floor</b>	Good
<b>Other fittings</b>	N/A
<b>Electrics</b>	Good
Used Lights, have been tested	
<b>General Condition</b>	Good
<b>Overall Internal Assessment Summary</b>	Good Condition, Refurbished Unit

## Media summary



Photo 1



Photo 2



Photo 3



Photo 4

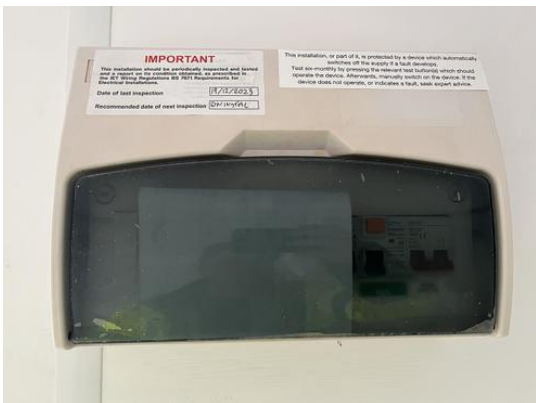


Photo 5



Photo 6



Photo 7



Photo 8



Photo 9