



Unit Assessment Sheet

Complete

Score	52 / 73 (71.23%)	Flagged items	0	Actions	0
--------------	------------------	----------------------	---	----------------	---

2-4 External Pictures of Unit



Photo 1



Photo 2



Photo 3



Photo 4

2-4 Internal Pictures of Unit



Photo 5



Photo 6

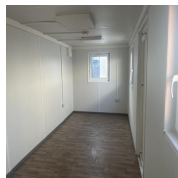


Photo 7

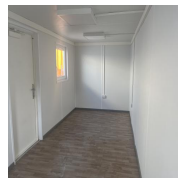


Photo 8

xxxx 21ft x 9ft AV office

External	4 / 10 (40%)
-----------------	--------------

Size (Length x Width X Height): 21ft x 9ft x 8ft

Maximum external dimension (eg. including legs, pipes, facade/cladding, AC units) (Length x Width X Height): 21ft x 9ft x 8ft

Specification: Anti-Vandal Office

Color: RAL 9010

Windows: 3 no 915x1060

Doors: 1 no 875 x 2125

Roof Insulation: Yes

Wall Insulation: Yes

Lifting:

	ISO Corners Top	Forklift pockets
Keys		Yes
How many keys per lock are included?		Yes
Electrical		
Power in:		32A power plug
Consumer unit:		Yes 10-Way
Lighting:		LED panel light
Box Lights		
Number of lights:		2
Number of electrical sockets:		2
Number of electrical switches:		1
Heating:		Convactor heater
Number of heaters:		1
Internal		
		2 / 2 (100%)
Rooms:		1
Floor finish:		HDV Vinyl
Wall finish:		Vinyl Faced Plasterboard
Kitchen unit:		N/A
Restroom:		N/A
General		
Fleet No. Supplier:		
Fleet No. JCPSA:		xxxx
Transport Company:		Other
Date:		17.01.2024 09:04 GMT

Assessed by:

Mario Bodis

External Inspection		25 / 33 (75.76%)
Roof		Good
Paint		Good
Walls		Good
Floor Beams		Good
Windows		Good
Shutters		Good
Doors		Good
Keys		Yes
How many keys per lock are included?		1
General Condition		Good
Overall External Assessment Summary	Good Condition, Refurbished unit	

Internal Inspection	21 / 28 (75%)
Ceiling	Good
Walls	Good
Windows	Good
Partition Doors / Keys	N/A
Trims	Good
Floor	Good
Other fittings	N/A
Electrics	Good
General Condition	Good
Overall Internal Assessment Summary	Good Condition, Refurbished Unit.

Media summary



Photo 1



Photo 2



Photo 3



Photo 4



Photo 5



Photo 6



Photo 7



Photo 8