



# Unit Assessment Sheet

Complete

|              |                  |                      |   |                |   |
|--------------|------------------|----------------------|---|----------------|---|
| <b>Score</b> | 52 / 73 (71.23%) | <b>Flagged items</b> | 0 | <b>Actions</b> | 0 |
|--------------|------------------|----------------------|---|----------------|---|

## 2-4 External Pictures of Unit

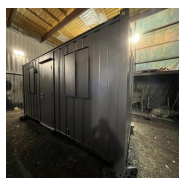


Photo 1

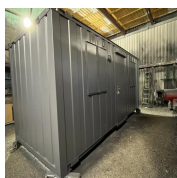


Photo 2



Photo 3

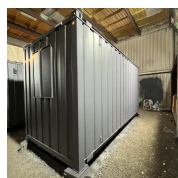


Photo 4

## 2-4 Internal Pictures of Unit



Photo 5



Photo 6



Photo 7



Photo 8




Photo 9

xxxx - 21ft x 9ft AV office

|   |                    |
|---|--------------------|
| <b>External</b>   | 4 / 10 (40%)       |
| <b>Size (Length x Width X Height):</b>  | 21ft x 9ft x 8ft   |
| <b>Maximum external dimension (eg. including legs, pipes, facade/cladding, AC units) (Length x Width X Height):</b> | 21ft x 9ft x 8ft   |
| <b>Specification:</b>   | Anti-Vandal Office |
| <b>Color:</b>   | RAL 7016           |
| <b>Windows:</b>   | 3 no 915 x 1060    |
| <b>Doors:</b>   | 1 no 875 x 2125    |
| <b>Roof Insulation:</b>   | yes                |
| <b>Wall Insulation:</b>   | yes                |

## Lifting:

|   |                 |                          |
|---|-----------------|--------------------------|
|   | ISO Corners Top | Forklift pockets         |
| <b>Keys</b>   |                 | Yes                      |
| <b>How many keys per lock are included?</b>                                       |                 | Yes                      |
| Electrical  |                 |                          |
| <b>Power in:</b>  |                 | 32A power plug           |
| <b>Consumer unit:</b>   |                 | Yes 7 WAY                |
|  |                 |                          |
| Photo 10  |                 |                          |
| <b>Lighting:</b>  |                 | LED panel light          |
| <b>Number of lights:</b>  |                 | 2                        |
| <b>Number of electrical sockets:</b>  |                 | 2                        |
| <b>Number of electrical switches:</b>   |                 | 1                        |
| <b>Heating:</b>   |                 | Convactor heater         |
| <b>Number of heaters:</b>   |                 | 1                        |
| <b>Internal</b>   |                 | 2 / 2 (100%)             |
| <b>Rooms:</b>   |                 | 1                        |
| <b>Floor finish:</b>  |                 | HDV Vinyl                |
| <b>Wall finish:</b>   |                 | Vinyl Faced Plasterboard |
| <b>Kitchen unit:</b>  |                 | N/A                      |
| <b>Restroom:</b>  |                 | N/A                      |
| General   |                 |                          |
| <b>Fleet No. Supplier:</b>  |                 |                          |
| <b>Fleet No. JCPSA:</b>   |                 | XXXX                     |

**Transport Company:**

Other

**Date:**

18.01.2024 10:20 GMT

**Assessed by:**

Mario Bodis

| <b>External Inspection</b>                  |                                  | 25 / 33 (75.76%) |
|---|----------------------------------|------------------|
| <b>Roof</b>                                 |                                  | Good             |
| <b>Paint</b>                                |                                  | Good             |
| <b>Walls</b>                                |                                  | Good             |
| <b>Floor Beams</b>                          |                                  | Good             |
| <b>Windows</b>                              |                                  | Good             |
| <b>Shutters</b>                             |                                  | Good             |
| <b>Doors</b>                                |                                  | Good             |
| <b>Keys</b>                                 |                                  | Yes              |
| <b>How many keys per lock are included?</b> |                                  | 1                |
| <b>General Condition</b>                    |                                  | Good             |
| <b>Overall External Assessment Summary</b>  | Good Condition, Refurbished Unit |                  |

| <b>Internal Inspection</b>                 |                                   | 21 / 28 (75%) |
|--|-----------------------------------|---------------|
| <b>Celling</b>                             |                                   | Good          |
| <b>Walls</b>                               |                                   | Good          |
| <b>Windows</b>                             |                                   | Good          |
| <b>Partition Doors / Keys</b>              |                                   | N/A           |
| <b>Trims</b>                               |                                   | Good          |
| <b>Floor</b>                               |                                   | Good          |
| Needs Cleaning                             |                                   |               |
| <b>Other fittings</b>                      |                                   | N/A           |
| <b>Electrics</b>                           |                                   | Good          |
| Tested                                     |                                   |               |
| <b>General Condition</b>                   |                                   | Good          |
| <b>Overall Internal Assessment Summary</b> | Good Condition, Refurbished Unit. |               |

## Media summary



Photo 1



Photo 2



Photo 3



Photo 4



Photo 5



Photo 6



Photo 7



Photo 8



Photo 9



Photo 10