



# Unit Assessment Sheet

Incomplete

<b>Score</b>	44 / 73 (60.27%)	<b>Flagged items</b>	0	<b>Actions</b>	0
--------------	------------------	----------------------	---	----------------	---

## 2-4 External Pictures of Unit



Photo 1



Photo 2



Photo 3



Photo 4

## 2-4 Internal Pictures of Unit

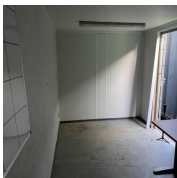


Photo 5

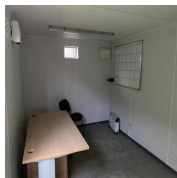


Photo 6

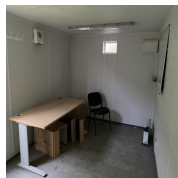


Photo 7

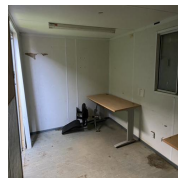


Photo 8

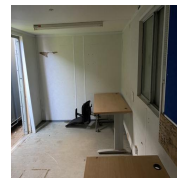


Photo 9

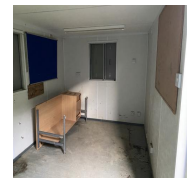


Photo 10

2312246 32ft x 10ft Office

External

3 / 10 (30%)

**Size (Length x Width X Height):**

32ft x 10ft x 9ft

**Maximum external dimension (eg. including legs, pipes, facade/cladding, AC units) (Length x Width X Height):**

Facade above door 8cm

**Specification:**

Flat steel AV Office

**Color:**

Light Grey RAL no specified

**Windows:**

3 AV 915 x 915 1 no high level

**Doors:**

2

**Roof Insulation:**


Yes

**Wall Insulation:**

Yes

**Lifting:**

ISO Corners Top

<b>Keys</b>	Yes
<b>How many keys per lock are included?</b>	Yes
Electrical	
<b>Power in:</b>	32A power plug
<b>Consumer unit:</b>	10 way
	
Photo 11	
<b>Lighting:</b>	LED panel light
<b>Number of lights:</b>	4
<b>Number of electrical sockets:</b>	4
<b>Number of electrical switches:</b>	2
<b>Heating:</b>	Convactor heater
<b>Number of heaters:</b>	2
Internal	
	0 / 2 (0%)
<b>Rooms:</b>	2
<b>Floor finish:</b>	HDV Vinyl
<b>Wall finish:</b>	Vinyl faced plasterboard
<b>Kitchen unit:</b>	No
<b>Restroom:</b>	No
General	
<b>Fleet No. Supplier:</b>	17627
<b>Fleet No. JCPSA:</b>	2312246
<b>Transport Company:</b>	Other

**Date:**

03.01.2024 10:45 GMT

**Assessed by:**

Mario Bodis

**External Inspection**

21 / 33 (63.64%)

**Roof**

**Paint**

Fair



Photo 12

**Score justification:**

Fair paint shows age worn

**Walls**

Good

**Floor Beams**

Good

**Windows**

Good

**Shutters**

Good

**Doors**

Good



Photo 13

**Keys**

Yes

**How many keys per lock are included?**



4 on one other door na

**General Condition**

Good

**Overall External Assessment Summary**

Paint fair shows age no signs of leaks structurally sound

<b>Internal Inspection</b>	20 / 28 (71.43%)
<b>Celling</b>	Good
<b>Walls</b>	Good
<b>Windows</b>	Good
<b>Partition Doors / Keys</b>	N/A
<b>Trims</b>	Good
<b>Floor</b>	Fair
 	
Photo 14	Photo 15
<b>Score justification:</b>	Mould
<b>Other fittings</b>	N/A
<b>Electrics</b>	Good
<b>General Condition</b>	Good
<b>Overall Internal Assessment Summary</b>	Good internal slight mould on floor

## Media summary



Photo 1



Photo 2



Photo 3



Photo 4

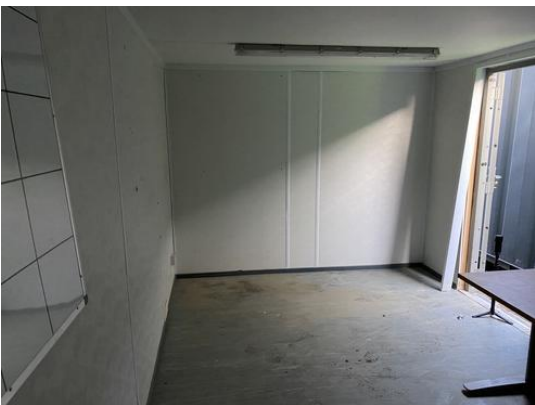


Photo 5

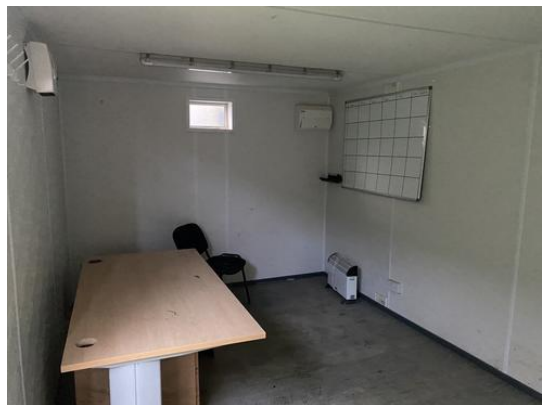


Photo 6



Photo 7



Photo 8



Photo 9



Photo 10



Photo 11



Photo 12



Photo 13



Photo 14



Photo 15