



Unit Assessment Sheet

Complete

Score	62 / 69 (89.86%)	Flagged items	0	Actions	0
--------------	------------------	----------------------	---	----------------	---

2-4 External Pictures of Unit



Photo 1



Photo 2



Photo 3



Photo 4

2-4 Internal Pictures of Unit



Photo 5

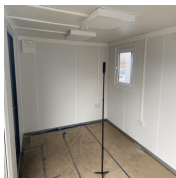


Photo 6



Photo 7

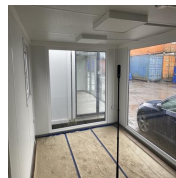


Photo 8



Photo 9

2108228

External

3 / 10 (30%)

Size (Length x Width X Height):

16ft x 10ft x 8ft

Maximum external dimension (eg. including legs, pipes, facade/cladding, AC units) (Length x Width X Height):

16ft x 10.5ft x 8.5ft

Specification:

JCPSA

Color:

RAL 7016

Windows:

2 no 2000x2000 FIXED + 2 no 900x900 TILT N TURN

Doors:

1 no 910x2095

Roof Insulation:


Yes

Wall Insulation:

Yes

Lifting:

ISO Corners Top

Keys	Yes
How many keys per lock are included?	Yes
Electrical	
Power in:	32A power plug
Consumer unit:	Yes
	
Photo 10	
Lighting:	LED panel light
Number of lights:	3
Number of electrical sockets:	2
Number of electrical switches:	1
Heating:	Convactor heater
Number of heaters:	1
Internal	2 / 2 (100%)
Rooms:	1
Floor finish:	HD vinyl
Wall finish:	Vinyl faced plasterboard
Kitchen unit:	N/A
Restroom:	N/A
General	
Fleet No. Supplier:	
Fleet No. JCPSA:	2108228
Transport Company:	Other

Date:

06.03.2024 07:41 GMT

Assessed by:

Mario Bodis

External Inspection		29 / 29 (100%)
Roof		Excellent
Paint		Excellent
Walls		Excellent
Floor Beams		Excellent
Windows		Excellent
Shutters		N/A
Doors		Excellent
Keys		Yes
How many keys per lock are included?		1
General Condition		Excellent
Overall External Assessment Summary	Excellent condition, Brad new unit	

Internal Inspection	28 / 28 (100%)
Ceiling	Excellent
Walls	Excellent
Windows	Excellent
Partition Doors / Keys	N/A
Trims	Excellent
Floor	Excellent
Other fittings	N/A
Electrics	Excellent
General Condition	Excellent
Overall Internal Assessment Summary	Excellent condition brand new unit

Media summary



Photo 1



Photo 2



Photo 3



Photo 4



Photo 5



Photo 6



Photo 7



Photo 8

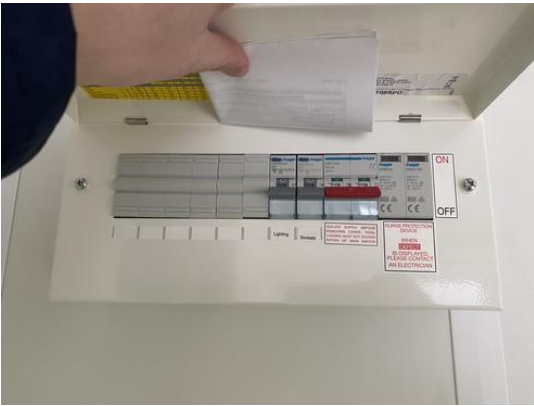


Photo 9

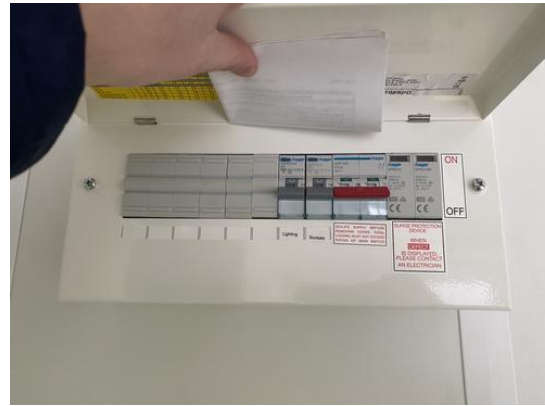


Photo 10