



# Unit Assessment Sheet

**Complete**

<b>Score</b>	61 / 97 (62.89%)	<b>Flagged items</b>	0	<b>Actions</b>	0
--------------	------------------	----------------------	---	----------------	---

## 2-4 External Pictures of Unit

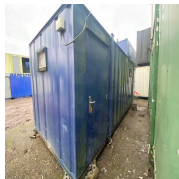


Photo 1



Photo 2



Photo 3



Photo 4

## 2-4 Internal Pictures of Unit

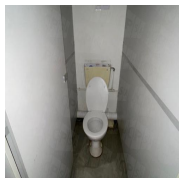


Photo 5

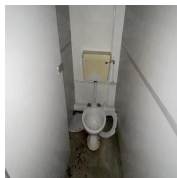


Photo 6



Photo 7



Photo 8

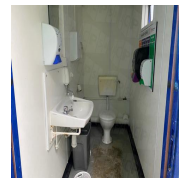


Photo 9

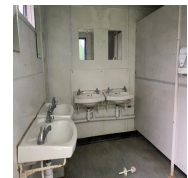


Photo 10



Photo 11



Photo 12

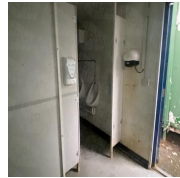


Photo 13



Photo 14

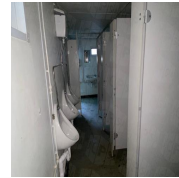


Photo 15



Photo 16

2412135 24ft x 9ft Used 4+1  
Male/Female Toilet Block

<b>External</b>	3 / 10 (30%)
<b>Size (Length x Width X Height):</b>	24ft x 9ft x 8ft
<b>Maximum external dimension (eg. including legs, pipes, facade/cladding, AC units) (Length x Width X Height):</b>	24ft x 9ft x 8ft
<b>Specification:</b>	Toilet Block
<b>Color:</b>	Blue
<b>Windows:</b>	3 no High level
<b>Doors:</b>	2 no Steel External

<b>Roof Insulation:</b>	Yes
<b>Wall Insulation:</b>	Yes
<b>Lifting:</b>	Lifting Eye Top
<b>Keys</b>	Yes
<b>How many keys per lock are included?</b>	Yes
Electrical	
<b>Power in:</b>	32A power plug
<b>Consumer unit:</b>	Yes
<b>Lighting:</b>	Noncorrosive batten light (IP65)
<b>Number of lights:</b>	4
<b>Number of electrical sockets:</b>	0
<b>Number of electrical switches:</b>	2
<b>Heating:</b>	Downflow heater
<b>Number of heaters:</b>	2
Internal	2 / 2 (100%)
<b>Rooms:</b>	2
<b>Floor finish:</b>	Vinyl
<b>Wall finish:</b>	Vinyl faced plasterboard
<b>Kitchen unit:</b>	N/A
<b>Restroom:</b>	Yes
<b>Type:</b>	4 Gents + 1 Ladies
General	
<b>Fleet No. Supplier:</b>	
<b>Fleet No. JCPSA:</b>	2412135

**Transport Company:**

Other

Southdown Engineers

**Date:**

18.12.2024 08:26 GMT

**Assessed by:**

Mario Bodis

<b>External Inspection</b>		25 / 33 (75.76%)
<b>Roof</b>		Good
<b>Paint</b>		Good
<b>Walls</b>		Good
<b>Floor Beams</b>		Good
<b>Windows</b>		Good
<b>Shutters</b>		Good
<b>Doors</b>		Good
<b>Keys</b>		Yes
<b>How many keys per lock are included?</b>		1
<b>General Condition</b>		Good
<b>Overall External Assessment Summary</b>	Good external condition, shows slight signs of ageing, minor scuffs, could use a jet wash.	

<b>Internal Inspection</b>	31 / 52 (59.62%)
<b>Celling</b>	Good
<b>Walls</b>	Good
Minor marks/scuffs to some walls	
<b>Windows</b>	Good
<b>Partition Doors / Keys</b>	N/A
<b>Trims</b>	Good
<b>Floor</b>	Fair
<b>Score justification:</b>	Requires deep clean
<b>Other fittings</b>	Toilet
<b>Toilet/WC</b>	Fair
<b>Toilet cubicles</b>	Fair
<b>Cistern</b>	Fair
<b>Handwash Basin</b>	Fair
<b>Urinals</b>	Fair
<b>Water heater</b>	Fair
<b>Electrics</b>	Fair
<b>Score justification:</b>	To be tested
<b>General Condition</b>	Good
<b>Overall Internal Assessment Summary</b>	Overall good internal condition, minor scuffs to walls, electrical and plumbing to be tested upon purchase

## Media summary



Photo 1



Photo 2



Photo 3



Photo 4

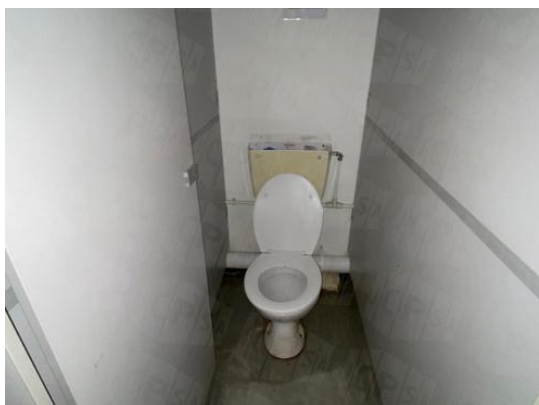


Photo 5

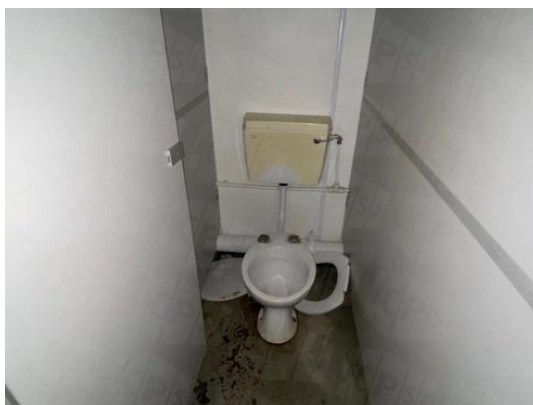


Photo 6



Photo 7



Photo 8

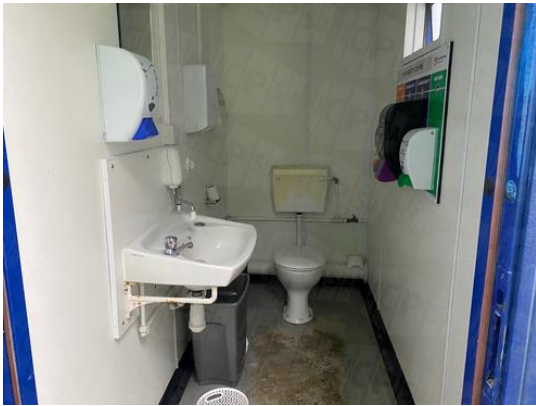


Photo 9



Photo 10



Photo 11



Photo 12



Photo 13



Photo 14



Photo 15



Photo 16